

# OUTSULATION<sup>®</sup> PD (NC) SYSTEM

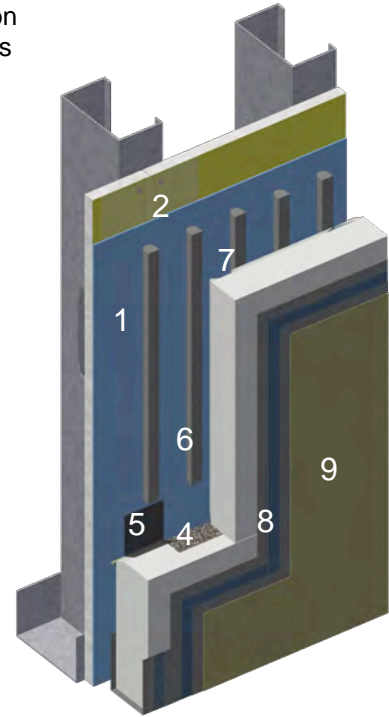
# DSC600NC

A commercial Exterior Insulation and Finish System with Moisture Drainage and an optional Non-Combustible (NC) protective coating

Outsulation PD is part of Dryvit's family of high-performance Exterior Insulation and Finish Systems and has been designed specifically to meet the provisions of the Ontario Association of Architects Wall Exclusions and Endorsements, released September 2009. Since 1969, architects and owners have looked to Dryvit for excellence in EIFS' solutions to their design challenges. For over 45 years the core of Class PB, Outsulation System technology has set the industry standard and has been installed on over 350,000 buildings worldwide. Outsulation PD is another example of how Dryvit understands what makes EIFS work better than any of its contemporaries.

## SYSTEM COMPONENTS

1. Backstop<sup>™</sup> NT / Dryflex<sup>™</sup> or Backstop NT-VB Water-Resistive Barrier Coating
2. Dryvit Grid Tape<sup>™</sup> / AquaFlash<sup>®</sup> Mesh
3. Dryvit AquaFlash System or Flashing Tape<sup>™</sup> and Flashing Tape Surface Conditioner<sup>™</sup> (not shown)
4. Dryvit Vent Assembly<sup>™</sup>
5. Dryvit AquaDuct
6. Dryvit Adhesive in Vertical Notched Trowel Configuration
7. Insulation Board with a 10mm Geometrically Defined Drainage Cavity
8. Dryvit Reinforced Base Coat
9. Dryvit Finish



## POSITIVE DRAINAGE TECHNOLOGY

Outsulation PD offers the most comprehensive, easy-to-install drainage system available today for commercial use. It provides three lines of defense against water intrusion. The first is Dryvit's time-tested combination of reinforced base coat and finish. The second is our geometrically defined insulation board, AquaDuct and vent assembly. The third is Backstop NT, an Air/Water Resistive Barrier in combination Dryvit's waterproof AquaFlash System to protect wall openings (such as windows). A compatible sealant must be utilized at all system terminations.

## WHY THE DIFFERENT CHOICES FOR WATER RESISTIVE BARRIERS?

The drainage channels present in Outsulation PD will evacuate "incidental" water that for a variety of reasons may find its way behind the insulation. Water Resistive Barriers (WRBs) prevent this moisture from coming into contact with the substrate, as it drains. All Dryvit WRBs are classified in Canada as a Type III air barrier, but offer a range of vapour permeability. From highly permeable Backstop NT, to the highly restrictive Backstop NT-VB (vapour barrier), allowing the designer to balance exterior wall system properties with the building's mechanical and interior climate controls. All WRBs are specially formulated, flexible, polymer-based, coatings providing air and moisture barrier function. Dryvit's WRBs are an essential element of the Outsulation PD System. Details regarding the performance of Dryvit barriers are available upon request from Dryvit.

## WARRANTY

Dryvit Systems Canada shall provide a written moisture drainage and limited materials warranty against defective material upon written request. Dryvit shall make no other warranties, expressed or implied. Dryvit does not warrant workmanship. Full details are available from Dryvit Systems Canada.

**Dryvit Systems Canada**  
129 Ringwood Drive  
Stouffville, ON  
L4A 8C1  
1-800-263-3308  
www.dryvit.ca

Information contained in this product sheet conforms to the standard detail recommendations and specifications for the installation of Dryvit Systems Canada products as of the date of publication of this document and is presented in good faith. Dryvit Systems Canada assumes no liability, expressed or implied, as to the architecture, engineering or workmanship of any project. To ensure that you are using the latest, most complete information, contact Dryvit Systems Canada.

